

Latest News: Galbiati is the first Italian Steel Service Center... » Galbiati is the first Italian Steel Service Center attending the innovative and



Login Register

search...

SEARCH

Home Our Company Activities Manufacturing Products Jobs Partners Member Area Contact Us Request Information B2B

Cold Rolled

Cold rolled low carbon steel flatproducts for cold forming UNI EN10130.



Cold rolled steel flat products made of high yield strength for cold forming UNI EN 10268.

TYPES OF FORMATS

Coils from 600 to 2,000 mm with with slit and non-slit edges.

Strips from 20 to 600 mm with slit edges.

Flattened sheets in commercial and non-commercial formats.

Edged coils.

CONDITIONS OF SUPPLY

As per the standards of reference.

Caratteristiche meccaniche mediante prova di trazione in senso trasversale					
QUALITA	Rp 02 (N/mm ²) max	Rm (N/mm ²)	A % min L ₀ = 80 mm	r min	n min
DC 01	280	270 ÷ 410	28	-	-
DC 03	240	270 ÷ 370	34	1.3	-
DC 04	210	270 ÷ 350	38	1.6	0.180
DC 05	180	270 ÷ 330	40	1.9	0.200
DC 06	180	270 ÷ 350	38	1.8	0.220

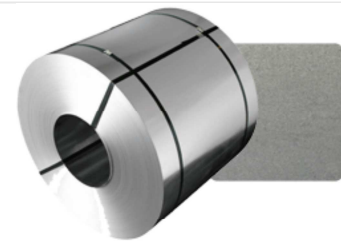
Composizione chimica					
QUALITA	C % Max	Mn % Max	S % Max	P % Max	Ti % Max
DC 01	0.120	0.600	0.045	0.045	-
DC 03	0.100	0.450	0.035	0.035	-
DC 04	0.080	0.400	0.030	0.030	-
DC 05	0.060	0.350	0.025	0.025	-
DC 06	0.020	0.250	0.020	0.020	0.300

Caratteristiche meccaniche											
Qualità	R _p (MPa)		R _m (MPa)		A ₅₀ min (%)		Test piega d		Test piega d		
	min - max	min - max	min - max	min - max	t≤0.7	t>0.7	min	max	t≤0.7	t>0.7	
EN10268 :06	trasversale					longitudinale					
HC260LA	260- 330	350-430	24	26	0 t	0 t	240- 310	340- 420	25	27	0 t
HC300LA	300- 380	380-480	21	23	0 t	0 t	280- 360	370- 470	22	24	0 t
HC340LA	340- 420	410-510	19	21	0 t	0 t	320- 410	400- 500	20	22	0 t
HC380LA	380- 480	440-560	17	19	0.5 t	0.5 t	360- 460	430- 550	18	20	0.25 t
HC420LA	420- 520	470-590	15	17	0.5 t	0.5 t	400- 500	460- 580	16	18	0.25 t
HC500LA ¹⁾	500- 620	570-710	10	12	1.0 t	1.0 t	-	-	-	-	-

t = spessore del laminato in mm
1) simile alla norma

Composizione chimica								
Qualità	C (%)	Si (%)	Mn (%)	P (%)	S (%)	Al (%)	Ti (%)	Nb (%)
EN10268	max	max	max	max	max	min	max ¹⁾	max ¹⁾
HC260LA	0.1	0.5	0.6	0.025	0.025	0.015	0.15	0.09
HC300LA	0.1	0.5	1.0	0.025	0.025	0.015	0.15	0.09
HC340LA	0.1	0.5	1.1	0.025	0.025	0.015	0.15	0.09
HC380LA	0.1	0.5	1.6	0.025	0.025	0.015	0.15	0.09
HC420LA	0.1	0.5	1.6	0.025	0.025	0.015	0.15	0.09
HC500LA	0.1	0.5	1.6	0.025	0.025	0.015	0.15	0.09

1) Questi elementi possono essere presenti soli o in combinazione; il vanadio può essere utilizzato; la somma dei 3 elementi non deve però superare lo 0,22%



Latest News

Galbiati is the first Italian Steel Service

Galbiati is the first Italian Steel Service Center at

Galbiati will attend Blech Expo 2011

Galbiati will attend Blech Expo, the international tr

Galbiati ha partecipato alla fiera Tube 2011

Galbiati ha partecipato alla Fiera Internazionale deg

Online il nuovo sito Galbiati

Online a a partire dal mese di dicembre 2009 il nuovo

